

At childcare site, child or staff member develops any one of the following signs or symptoms:

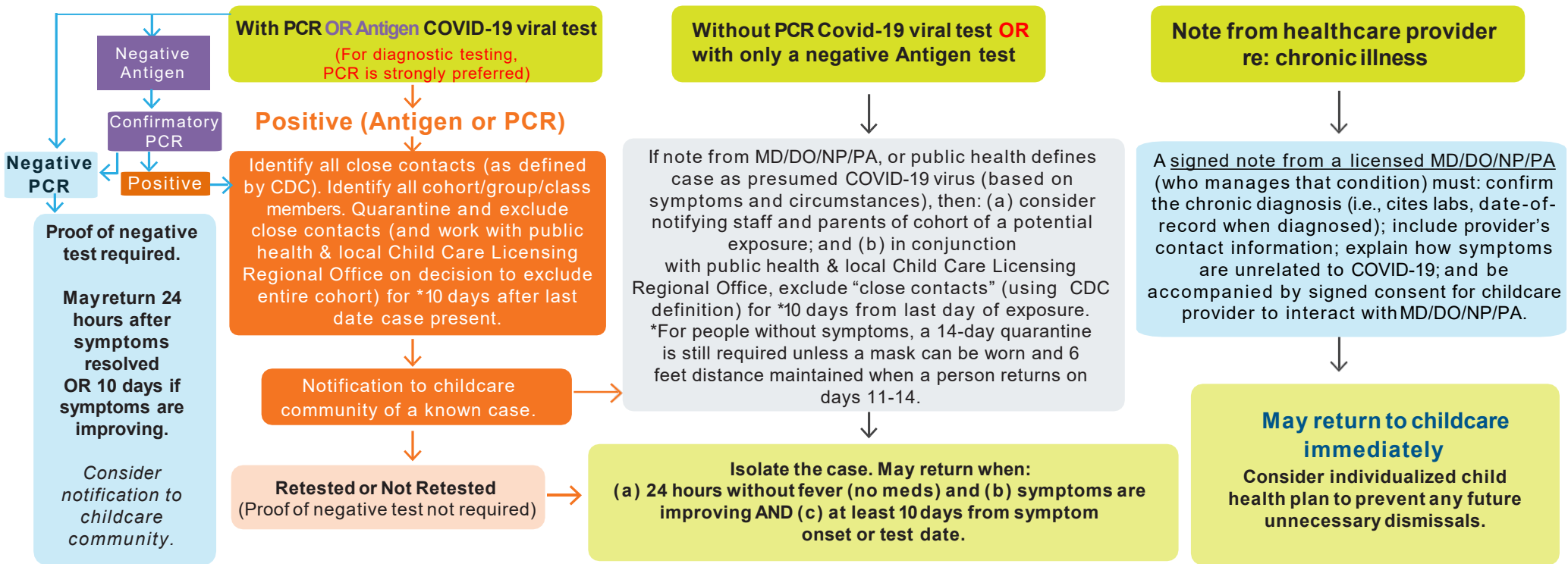
- Fever with or without chills/rigors (fever defined as $T > 100.0$ that does not resolve within 30 min. without medication)
- Cough* Shortness of breath Nasal congestion/rhinorrhea (runny nose)* Sore throat
- Nausea, vomiting, or diarrhea* Fatigue* New loss of taste/smell Headache*
- Muscle or body aches* Poor feeding or poor appetite*

* Disregard this symptom if childcare staff/personnel already aware of a chronic, pre-existing condition that causes the symptom. The nature of the presenting symptom (e.g., duration, intensity) must be consistent with the underlying chronic condition.

ACTION: Apply appropriate PPE; isolate child/staff member until sent home; recommend they contact health care provider for instructions/testing. Note: Other infections can cause similar symptoms (e.g., flu, strep) *but these do not rule out COVID-19 as co-occurring.*



CHILD / STAFF TO STAY HOME UNTIL...



If childcare provider becomes aware of one case in one cohort/class/group, then have childcare administrator fill out the [COVID-19 Online Notification Form](#) & call the local Child Care Licensing Regional Office at (619) 767-2200 to report the case for further directions on quarantine. For questions on reporting, outbreaks, or general questions, please call the COVID-Epi Schools line at (619) 632-8636, leave a message and your call will be returned.